



ELECTRIFY YOUR EXPERIENCE

VOKSER[®]

E L E C T R I C

SMART SOLUTIONS FOR WIRED WORLD



www.vokserindia.com



At Vokser, we take pride in being an India-based leader in the electrical accessories industry. With over a 12 years of expertise since our inception in 2012, we have carved out a reputation for delivering high-quality electrical goods. While our product range is broad, we specialize in manufacturing the essential foundation of any solution. Recognizing the importance of this component, we are dedicated to producing durable, premium products that meet the highest standards.

To ensure we deliver the best in both quality and aesthetics, our experts continuously update our offerings, providing bulb holders in a variety of colors, shapes, and sizes to meet current demands for decorative appeal. Every product undergoes a thorough quality check by our specialists before reaching our customers.

At Vokser, we guarantee not only top-quality products but also excellent customer relationships. We believe in building long-term business partnerships based on customer satisfaction, not just selling products. Vokser is dedicated to offering top-notch quality at competitive prices. As a responsible manufacturer, we fully support the "Make in India" initiative, ensuring all our products are made in India. Vokser believes in continuous learning, innovation, and delivering what our customers need for a truly satisfying experience.



EXON MODULAR OPEN SURFACE BOX



| Code | Description | Pcs. in Box | Master Cartoon Box |
|-------|-------------------------------|-------------|--------------------|
| V-634 | 1/2 MODULAR OPEN SURFACE BOX | 20 | 116 |
| V-635 | 3 MODULAR OPEN SURFACE BOX | 20 | 68 |
| V-636 | 4 MODULAR OPEN SURFACE BOX | 20 | 54 |
| V-637 | 6 MODULAR OPEN SURFACE BOX | 10 | 36 |
| V-638 | 8 HZ MODULAR OPEN SURFACE BOX | 10 | 32 |
| V-639 | 8 SQ MODULAR OPEN SURFACE BOX | 10 | 60 |
| V-640 | 12 MODULAR OPEN SURFACE BOX | 10 | 45 |
| V-641 | 18 MODULAR OPEN SURFACE BOX | 05 | 29 |

MODULAR SURFACE SILVER LINE BOX

| Code | Description | Pcs. in Box | Master Cartoon Box |
|-------|-----------------------------------|-------------|--------------------|
| V-624 | 1M SILVER LINE SURFACE BOX | 20 | 116 |
| V-625 | 2M SILVER LINE SURFACE BOX | 20 | 80 |
| V-626 | 3M SILVER LINE SURFACE BOX3 | 20 | 68 |
| V-627 | 4M SILVER LINE SURFACE BOX | 10 | 54 |
| V-628 | 6M SILVER LINE SURFACE BOX | 10 | 36 |
| V-629 | 8M LONG SILVER LINE SURFACE BOX | 10 | 32 |
| V-630 | 8M SQUARE SILVER LINE SURFACE BOX | 10 | 60 |
| V-631 | 12M SILVER LINE SURFACE BOX | 05 | 45 |
| V-632 | 16M SILVER LINE SURFACE BOX | 05 | 38 |
| V-633 | 18M SILVER LINE SURFACE BOX | 05 | 29 |



V-611



V-612

MCB BOX DISTRIBUTION BOARD & DOUBLE DOOR MCB BOC

| Code | Description | Pcs. in Box | Master Cartoon Box |
|-------|------------------|-------------|--------------------|
| V-611 | MCB BOX 1X2 P.P. | 22 | 36 |
| V-612 | MCB BOX 3X4 P.P. | 12 | 36 |



5X5 MODULAR CEILING ROSE

| | |
|--------------------|--------|
| CODE NO | 503 |
| PCS IN BOX | 20 PCS |
| MASTER CARTOON BOX | 50 BOX |



CEILING ROSE NANO P.C.R

| | |
|--------------------|--------|
| CODE NO | 0120 |
| PCS IN BOX | 20 PCS |
| MASTER CARTOON BOX | 84 BOX |

ROUND SHEET



| CODE | SIZE | PCS PER BC | MASTER PACKING |
|------|-----------------|------------|----------------|
| 0702 | 3.5 X 3.5 ROUND | 60 PCS | 60 BOX |
| 0703 | 4 X 4 ROUND | 50 PCS | 60 BOX |

FAN SHEET

| CODE | SIZE | CTN PACKING |
|------|-------------|---|
| 0704 | 6 X 6 ROUND | 15 PCS X 50 PKT (750 PCS) POUCH PACKING |
| 0705 | 7 X 7 ROUND | 15 PCS X 40 PKT (600 PCS) POUCH PACKING |



POP SHEET



| CODE | SIZE | CTN PACKING |
|------|-----------|--|
| 0706 | 4 X 4 POP | 30 PCS X 45 PKT (1350 PCS) POUCH PACKING |
| 0707 | 7 X 7 POP | 15 PCS X 45 PKT (675 PCS) POUCH PACKING |

MULTI PLUG- 3 PIN TOP SERIES



V-536



V-537



V-540

| Code | Description | Pcs. in Box | Master Cartoon Box |
|-------|-----------------------------|-------------|--------------------|
| V-536 | 6 AMP 3 PIN TOP | 20 | 96 |
| V-537 | 16 AMP 3 PIN TOP | 10 | 68 |
| V-540 | 3 PIN 5 WAY MULTI PLUG GOLD | 10 | 32 |

BULB HOLDER & PENDENT BULB HOLDER



V-519



V-520



V-531

| Code | Description | Pcs. in Box | Master Cartoon Box |
|-------|----------------------------|-------------|--------------------|
| V-519 | REGULAR ANGLE HOLDER | 20 | 70 |
| V-520 | REGULAR BATTEN HOLDER | 20 | 70 |
| V-531 | SKIRT PENDENT HOLDER WHITE | 20 | 140 |

MODULAR SERIES

| Code | Description | Pcs. in Box | Master Cartoon Box |
|-------|---------------------------|-------------|--------------------|
| V-501 | 5X5 DIAMOND ANGLE HOLDER | 10 | 60 |
| V-502 | 5X5 DIAMOND BATTEN HOLDER | 10 | 60 |
| V-504 | GOLD (OVAL) ANGLE HOLDER | 20 | 60 |
| V-505 | GOLD (OVAL) BATTEN HOLDER | 20 | 60 |



ALUMINIUM SINGLE CORE WIRE



| SIZE | GAUGE | BRAND | LENGTH | PVC | COLOUR | PACKING |
|----------------------|-------|--------|--------|-----------|--------|---------|
| 2.5 MM ² | 70 | VOKSER | 90 MTR | FRESH PVC | MIX | COIL |
| 4.0 MM ² | 80 | VOKSER | 90 MTR | FRESH PVC | MIX | COIL |
| 6.0 MM ² | 105 | VOKSER | 90 MTR | FRESH PVC | MIX | COIL |
| 12.0 MM ² | 115 | VOKSER | 90 MTR | FRESH PVC | MIX | COIL |
| 14.0 MM ² | 130 | VOKSER | 90 MTR | FRESH PVC | MIX | COIL |
| 10.0 MM ² | 145 | VOKSER | 90 MTR | FRESH PVC | MIX | COIL |
| 20.0 MM ² | 165 | VOKSER | 90 MTR | FRESH PVC | MIX | COIL |
| 8.0 MM ² | - | VOKSER | 90 MTR | FRESH PVC | MIX | COIL |

FLEXIBLE WIRE



| SIZE | BRAND | LENGTH | COLOUR | PACKING |
|---------------|--------|--------|--------|-----------|
| 10/76 AP 1000 | VOKSER | 90 MTR | MIX | POLY PACK |
| 14/76AP 1100 | VOKSER | 90 MTR | MIX | POLY PACK |
| 23/76AP 1450 | VOKSER | 90 MTR | MIX | POLY PACK |
| 40/76AP 2350 | VOKSER | 90 MTR | MIX | POLY PACK |

CAPACITORS 2.5 Dy | 2.5 Oil | 2.5 HD | 2.5 Premium 3.15 Dy | 3.15 Oil | 3.15 HD | 3.15 Premium

FanCap Series Specification

- Capacitance : 0.80uF to 6uF
- Tolerance : +/- 5%
- Operating Temp. : -25 / +85 C
- Rated Voltage : 440 VAC
- Testing Voltage : 600V / 2 Second

SubCap Series Specification

- Capacitance : 8uF to 72uF
- Tolerance : +/- 5%
- Operating Temp. : -25 / +85 C
- Rated Voltage : 440 VAC
- Testing Voltage : 750V / 2 Second

StartCap Series Specification

- Capacitance : 40-60uF to 200-250uF
- Tolerance : +/- 5%
- Operating Temp. : -25 / +85 C
- Rated Voltage : 440 VAC
- Testing Voltage : 440V / 2 Second

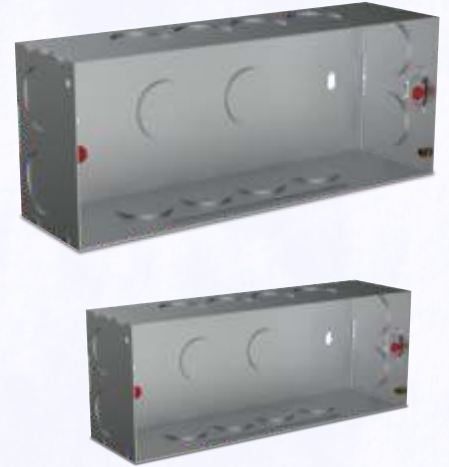
E-StartCap Series Specification

- Capacitance : 40-60uF to 200-250uF
- Tolerance : +/- 5%
- Operating Temp. : -25 / +85 C
- Rated Voltage : 440 VAC
- Testing Voltage : 440V / 2 Second



GI METAL BOX 1MM (18 GAUGE) & 0.8MM (20 GAUGE)

| Code | Description | Pcs. in Box | | Master Cartoon Pcs. |
|-------|------------------------|-------------|---------|---------------------|
| | | 1MM-A | 0.8MM-B | |
| V-615 | 1&2 M GI METAL BOX | 20 | 20 | 240 |
| V-616 | 3M GI METAL BOX | 20 | 20 | 240 |
| V-617 | 4M GI METAL BOX | 20 | 20 | 200 |
| V-618 | 6M GI METAL BOX | 10 | 10 | 120 |
| V-619 | 8M LONG GI METAL BOX | 10 | 10 | 120 |
| V-620 | 8M SQUARE GI METAL BOX | 10 | 10 | 120 |
| V-621 | 12M GI METAL BOX | 10 | 10 | 80 |
| V-622 | 16M GI METAL BOX | 05 | 05 | 60 |
| V-623 | 18M GI METAL BOX | 05 | 05 | 60 |



JUPITER DUBLE DOOR DB

HSN CODE : 8536

| Item Code | No. of Way | Master of Pkg. |
|-----------|------------|----------------|
| V-061 | 4 Way SPN | 24 |
| V-062 | 6 Way SPN | 18 |
| V-063 | 8 Way SPN | 18 |
| V-064 | 10 Way SPN | 14 |
| V-065 | 12 Way SPN | 12 |
| V-066 | 16 Way SPN | 10 |



Fan DownRod

| Sr. No. | Model | Quality | Material | Guage |
|---------|-------|-----------------|----------|----------|
| 1. | T 1.0 | 140 Gram / Feet | CRC | 18 Guage |
| 2. | T 1.2 | 160 Gram / Feet | CRC | 16 Guage |
| 3. | T 1.4 | 180 Gram / Feet | CRC | 16 Guage |

- All sizes from 6 inch to 10 feet available, Customised sizes shall be entertained.
- All Pipes Are Treated For Rust Protection and Powder Coated.
- White, Brown, Ivory and Black Colours Are Available, Customised Colours Shall Be Entertained.



Fan Fit Series

Fan Clamp Extra Heavy

Specification

- Item : Fan Clamp **Extra Heavy**
 Thickness : **2.0 mm**
 Weight : **110 Gram** Aprox
 Packing : Individual "Vokser" Pouch Pack
 Bag Pack of **50 Pcs**



HEAVY DUTY METAL CLAD PLUG 20 AMP

Part Code: CC95B
20 A/250V/2P
High Quality Aluminum Alloy Molded Outer Casing Assembled With Bakelite Plug, Brass Pins, Fine Grade Plastic Nalki And Other Accessories

HEAVY DUTY METAL CLAD SOCKET 20 AMP

Part Code: CC96B
20 A/250V/2P
High Quality Aluminum Alloy Molded Outer Casing Assembled With Bakelite Socket, Phosphor Bronze Contacts, Fine Grade Plastic Cap With Rubber Dori And Other Accessories



METAL CLAD PLUG 30 AMP

Part Code: CC98,99
30 A/440V/3P
High Quality Aluminum Alloy Molded Outer Casing Assembled With DMC Plug, Brass Pins, Fine Grade Plastic Nalki And Other Accessories.

METAL CLAD SOCKET 30 AMP

Part Code: CC97
30 A/440V/3P
High Quality Aluminum Alloy Molded Outer Casing Assembled With DMC Socket, Phosphor Bronze Contacts, Fine Grade Plastic Cap With Rubber Dori And Other Accessories.



DMC KIT KAT FUSE

| Si. No. | Description | Pcs. in Box | Master Cartoon Pcs. |
|---------|--------------------------------------|-------------|---------------------|
| 1. | 63A 415V Heavy Brass Copper Parts | 3 | 30 |
| 2. | 32A 415V AC Heavy Brass Copper Parts | 3 | 30 |

Re-Wireable Switch Fuse Unit (Casting)

- Range are available in 16 Amp to 63 Amp in S.P.N. DP. DP & T.P.N
- Enclosures are made of Cast Iron Body for Heavy Industrial usage
- Provided with conduit knockouts and sufficient space for easy wiring
- Switches are provided with safest interlock to avoid accidents
- Earthing terminals are provided as per Indian electricity rules
- Switches are fitted with highly vitreous porcelain for high mechanical and electrical strength.
- Contacts are made out of copper and brass, Plated as per Electrical Norms for better conductivity





ELECTRIFY YOUR EXPERIENCE

VOKSER[®]
ELECTRIC

VOKSER ELECTRIC PVT. LTD.

+91 91135 41570

info@vokserindia.com

www.vokserindia.com

Bangaluru:

Nayanappanahalli, Village, Beguru,
Bangaluru, Bangaluru Rural,
Bangaluru Pin Code: 560068 Karnataka

+91 99457 68812

blr@vokserindia.com

Mangalore :

1-29-2432 Ashoka Nagar
Behind Hoigebail,
Maarigudi Temple Road -575006

+91 8310242707

Email:mlr@vokserindia.com

Gujarat :

Pushparaj Ind. Estate,
Bapunagar,
Ahmedbad -380018 (INDIA)

Email:info@vokserindia.com

